

# Niki

5 feet 8 inches

30-23-35

HAIR Strawberry blonde

EYES Blue

DRESS 0

SHOE 7

## WALLFLOWER MANAGEMENT



# Niki

Height-5 feet 8 inches , Measure-30-23-35 , HAIR Strawberry blonde, EYES Blue , DRESS 0,SHOE 7



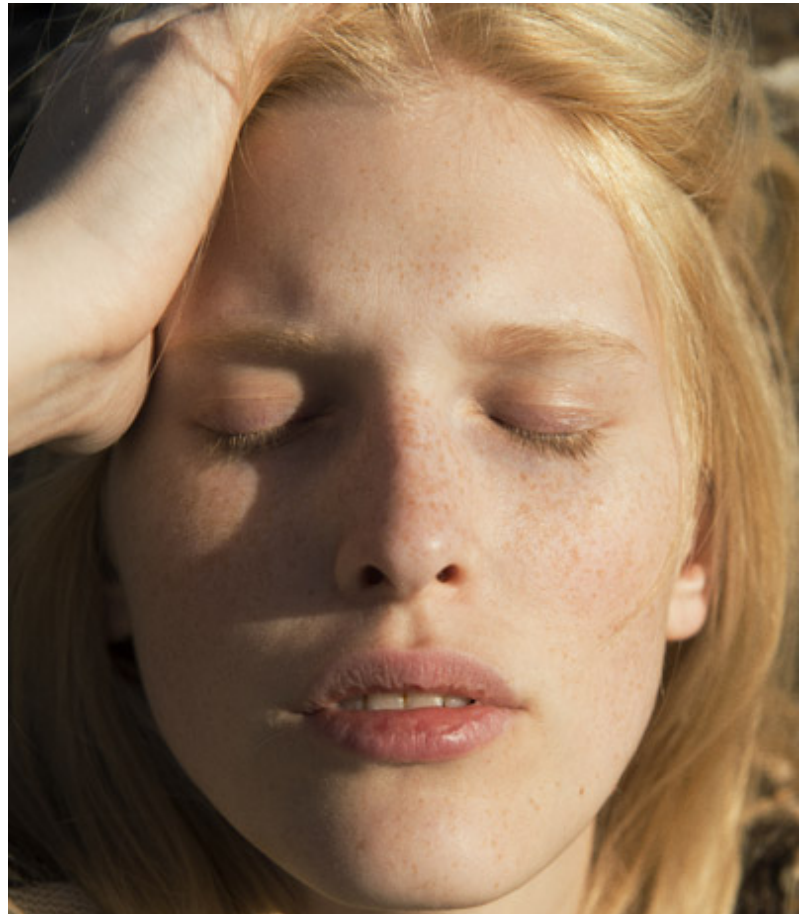
# Niki

Height-5 feet 8 inches , Measure-30-23-35 , HAIR Strawberry blonde, EYES Blue , DRESS 0,SHOE 7





Credit: PRINZA SCHILLER



# Niki

Height-5 feet 8 inches , Measure-30-23-35 , HAIR Strawberry blonde, EYES Blue , DRESS 0,SHOE 7



LEFT Tie-neck silk crepe de Chine blouse and top-down slinky-leg jeans, both by Chloé. RIGHT: Ruffled high-waist blouse, sliver-leg cropped leather trousers and Lemaire leather saddle boots, all by Chloé.

SHOP CHLOÉ



# Niki

Height-5 feet 8 inches , Measure-30-23-35 , HAIR Strawberry blonde, EYES Blue , DRESS 0,SHOE 7